

A detailed analysis of your income in relation to costs

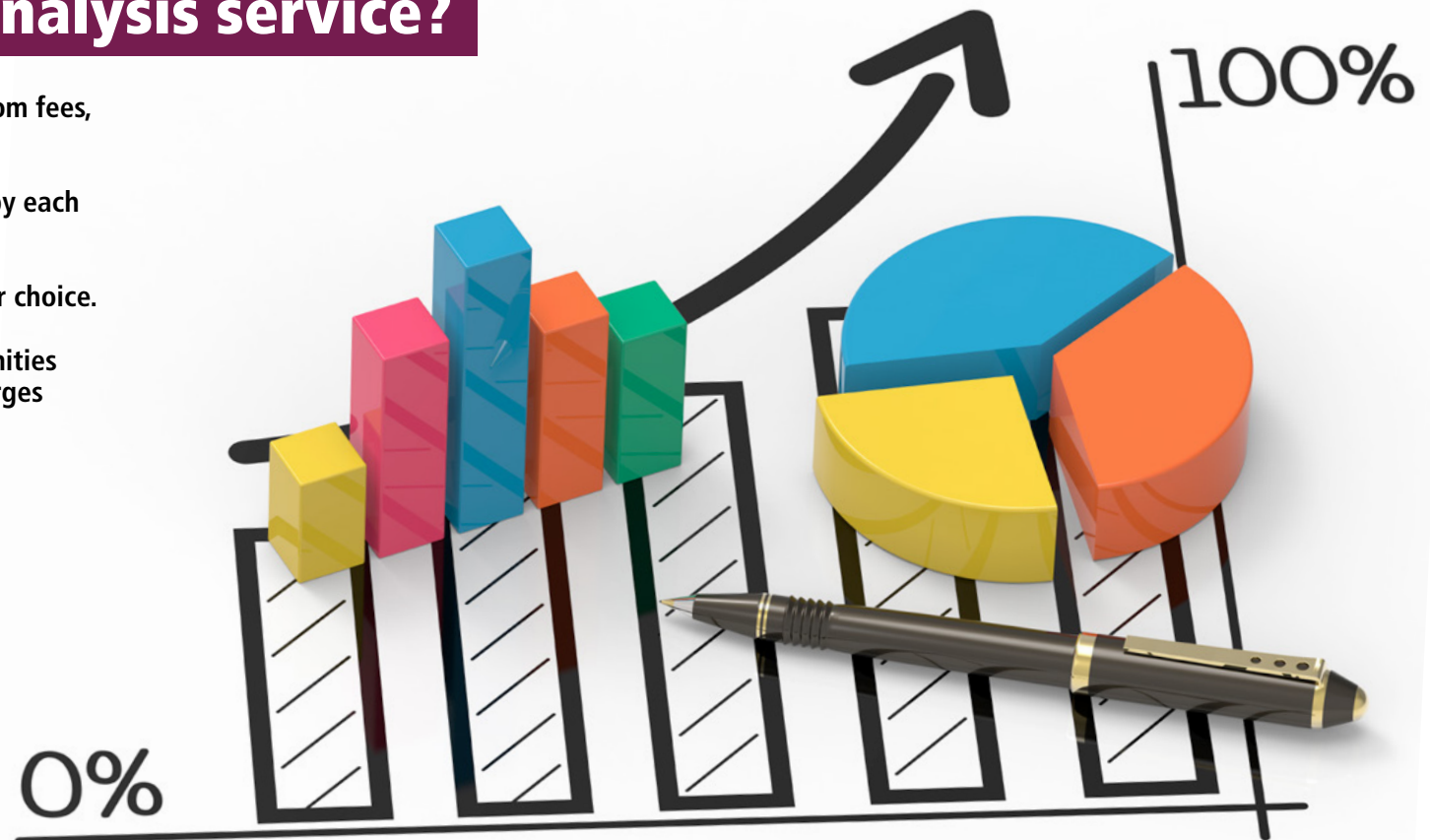


Why use our income analysis service?

- ➔ Understand your whole organisation's income from fees, charges and sales.
- ➔ See a breakdown of income in relation to costs by each service area.
- ➔ Compare your income with other councils of your choice.
- ➔ Obtain a high level overview of the key opportunities to generate additional income through fees, charges and sales.

An evidence-base for opportunity development

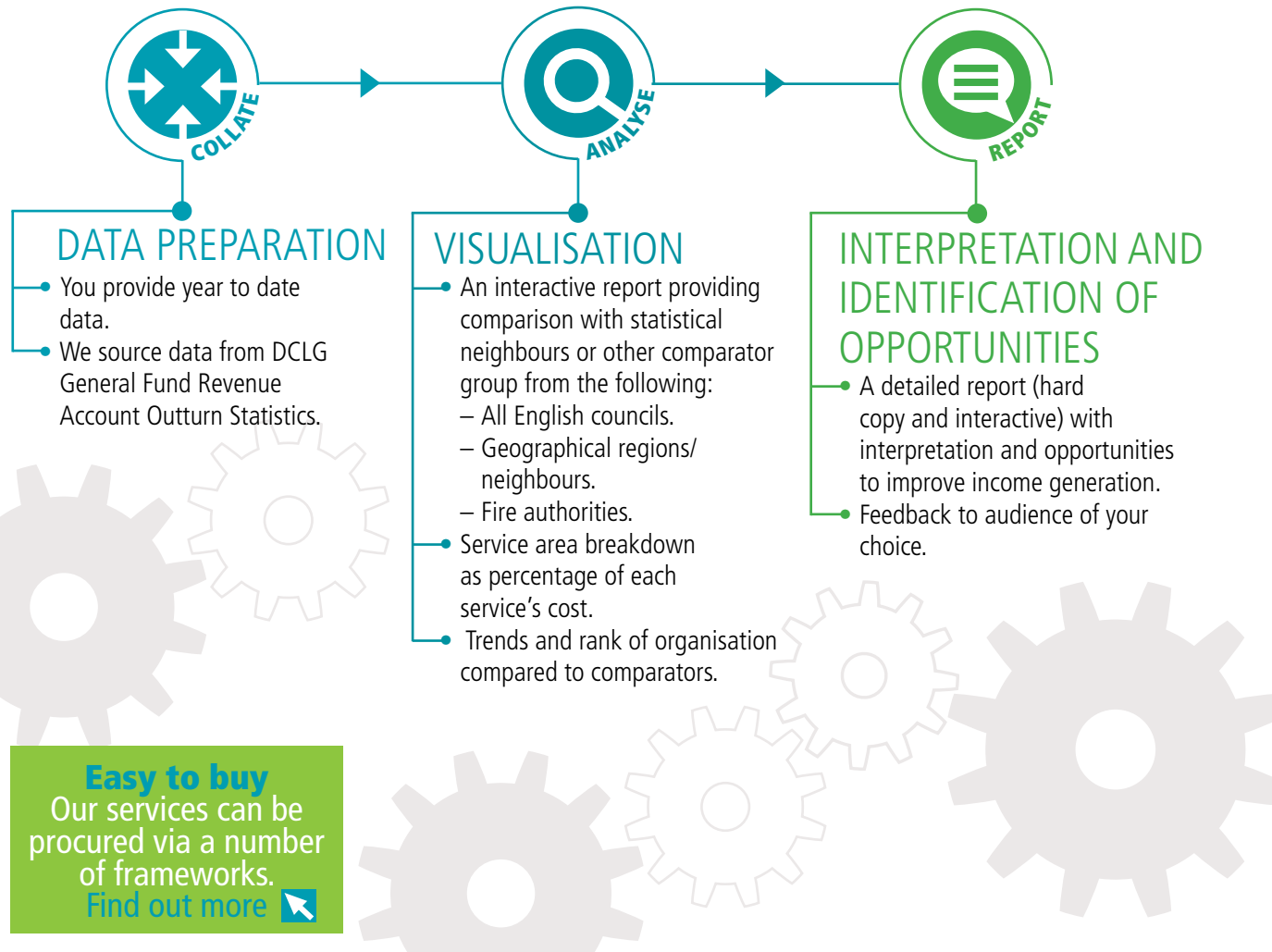
Our data analysis service enables you to visualise and understand your organisation's income from fees, charges and sales. The level of detail provided, combined with our expert interpretation provides you with an overview of the high level opportunities to improve your income generation.



Our approach

Our aim is to minimise the input required from your teams but to provide you with the detail and quality of information necessary to act upon the detailed opportunities.

Turnaround time for detailed analysis, challenge, checking and production of report is four weeks. We will report our findings to your chosen audience, with high level interpretation and an overview summary of potential opportunities to improve your income.



Easy to buy
Our services can be procured via a number of frameworks.
[Find out more](#)

Other services

- **Commercial Review**
Commercial reviews of service areas and commercial approach within your organisation with high level recommendations for improvements.
- **Business Case Production**
Development of business cases to support income generation projects or cost reduction, dependent upon your requirements.
- **Spend and Contract Management Analytics**
Quarterly, six-monthly or annual reporting to enable you to pro-actively manage spend.
- **Data Analytics and Intelligence**
Provision of detailed analysis and interpretation of data to aid future decision making and commissioning. Examples include analysis of: home to school transport for children with special educational needs; post; print; customer contact; and performance reporting on Better Care Fund intervention schemes.

We've already helped...

- **Broxtowe Borough Council**
- **Ipswich Borough Council**
- **Wakefield Council**
- **And lots of other clients**

